



# State Transportation Board Meeting

July 17, 2025





- ☐ Invocation
- ☐ Pledge of Allegiance
- ☐ Roll Call
- ☐ Welcome Remarks
- ☐ Approval of Minutes

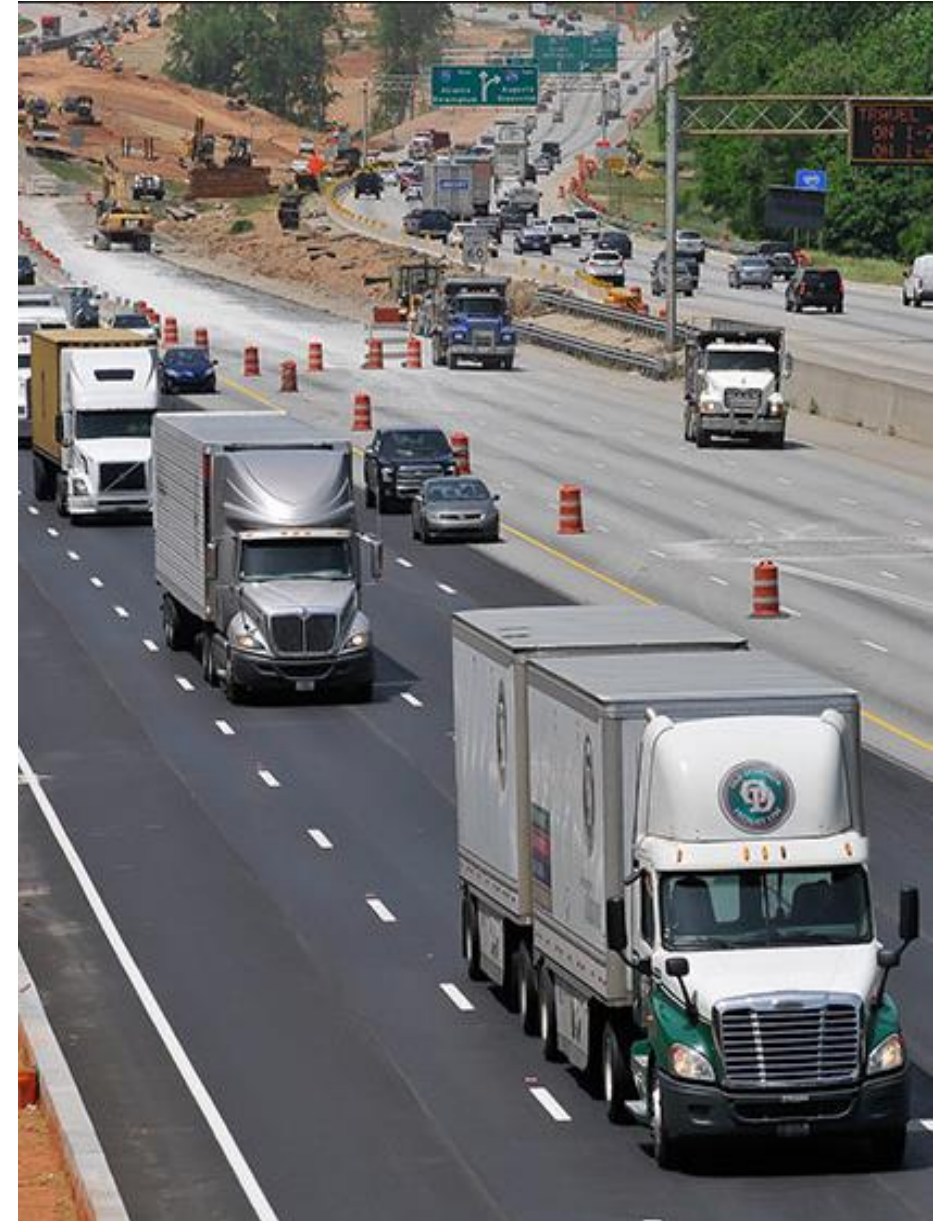






# August 2025 Letting Report

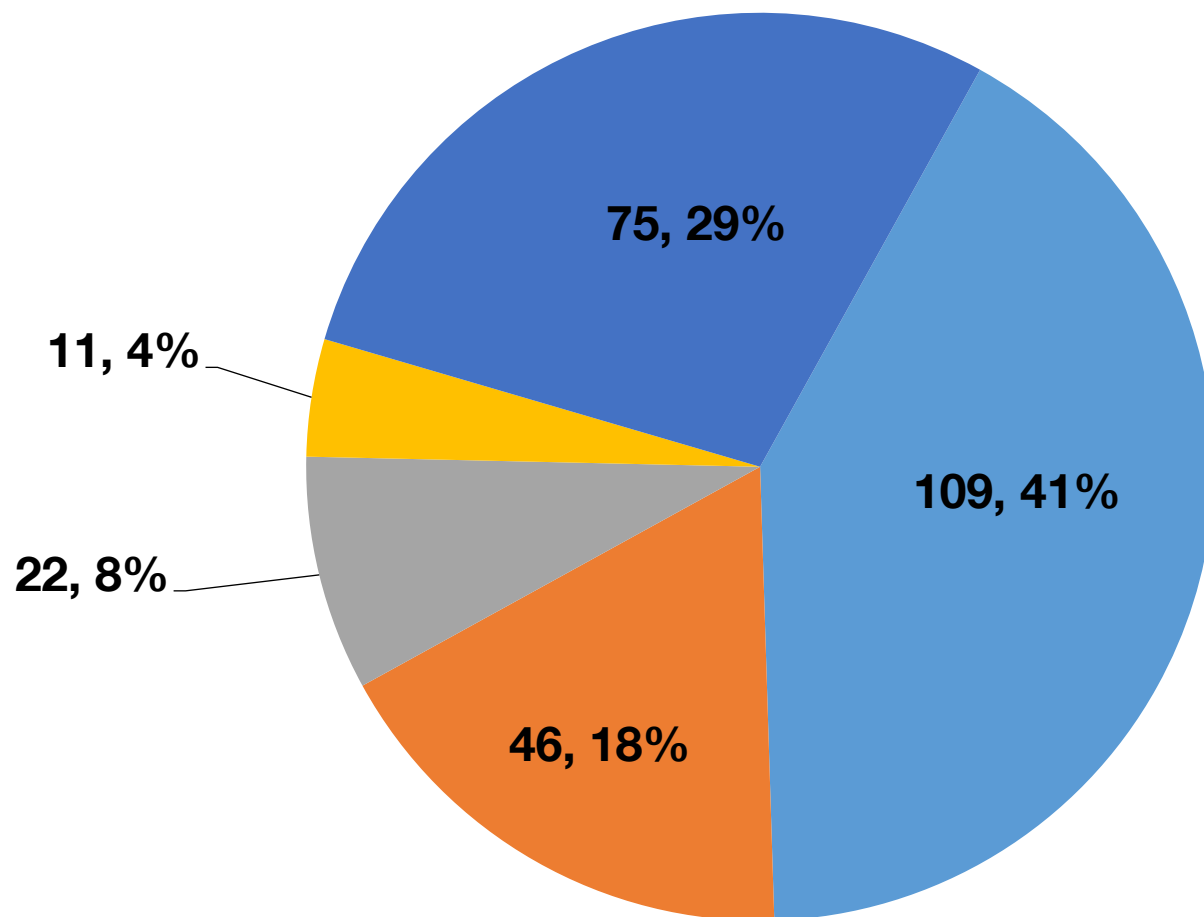
**Albert V. Shelby, III**  
**Director of Program Delivery**  
**July 17, 2025**





# Fiscal Year 2025 Letting Report

## Number of Projects Let in FY 2025 (Contractor Low Bid Award Data)



**Total = 263**

### GDOT & Local Lets

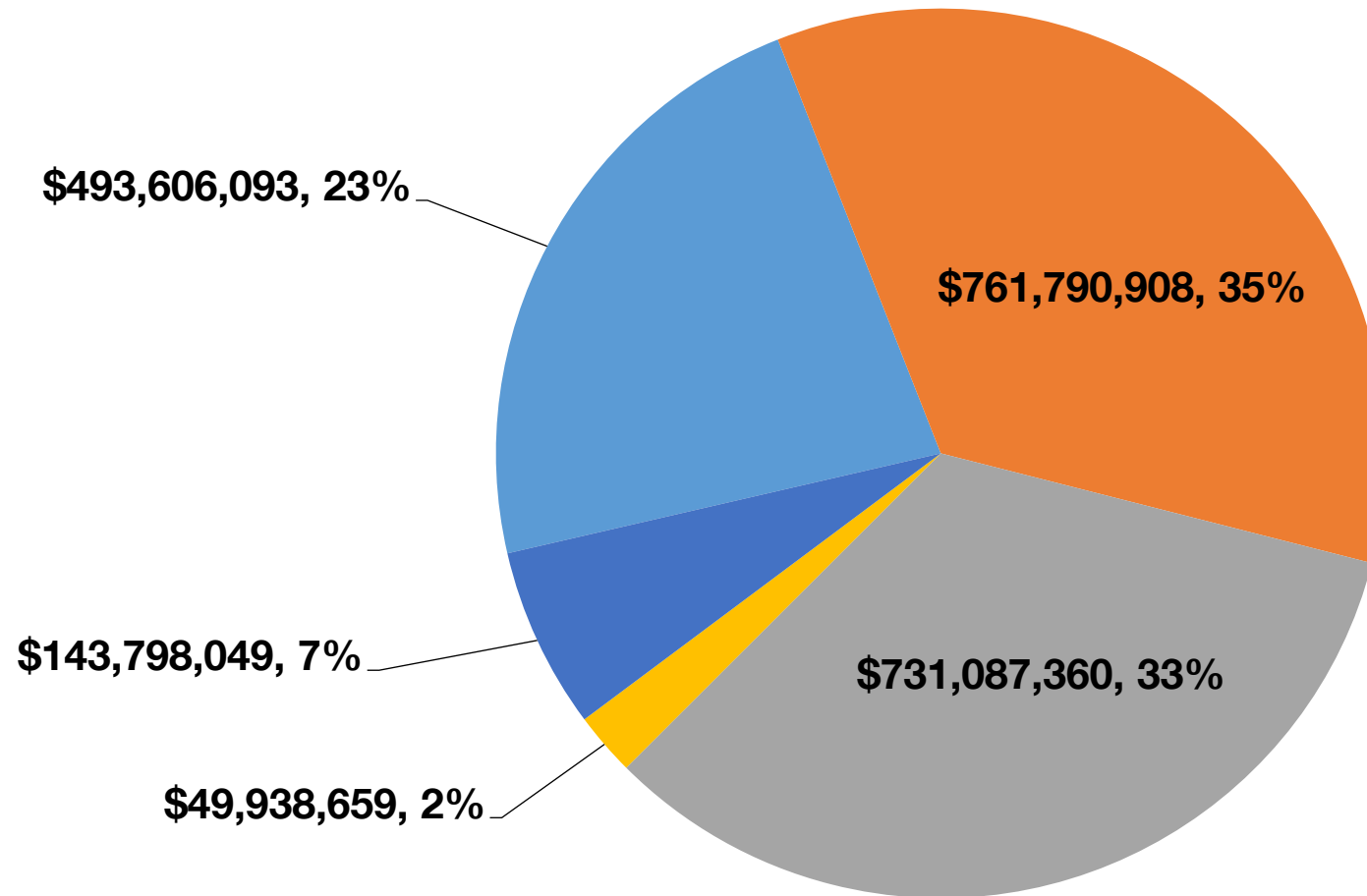
- Maintenance
- Bridges
- Roads
- Enhancements
- Safety

*As of June 27, 2025  
Source Bidding Administration*



# Fiscal Year 2025 Letting Report

## Dollar Amount of Projects Let in FY 2025 (Contractor Low Bid Award Data)



### GDOT & Local Lets

- Maintenance
- Bridges
- Roads
- Enhancement
- Safety

**Total = \$2,180,221,068**

As of June 27, 2025  
Source Bidding Administration



# June 2025 Letting Results

Summary	Presented to GDOT Board (Includes Adjustments)	Low Bid (Awarded to Contractor)	Low Bid w/Adjustments (Total Project Obligation)
GDOT Let (Project Count)	30	24	24
GDOT Let (Dollars)	\$180,553,144	\$98,159,504	\$101,443,454
Local Let (Project Count)	4	NA	NA
Local Let (Dollars)	\$46,088,717	NA	NA

\*Low Bid Award Amount includes the Deferred and Awarded projects.  
Does not include Engineering and Inspection, Utilities, Liquid AC, Incentives, LMIG and Rejected projects.

As of June 27, 2025  
Source Bidding Administration



# **GDOT Let Projects**

## **August 2025 Letting**



# GDOT Let Projects August 2025 Letting

Project ID	Description	Primary County	Primary Work Type	Congressional District	Project Let By	Project Sponsor
0017411	I-95 FM FLORIDA STATE LINE TO S CAROLINA STATE LINE-ITS EXP	Appling	ITS	001	DB	GDOT
0020738	OFF-SYSTEM SAFETY IMPROVEMENTS @ 1 LOC IN LONG COUNTY - HRRR	Long	Pavement Markings	001	DOT	GDOT
M006570	I-95 FROM GLYNN COUNTY LINE TO N OF SR 251	McIntosh	Resurface & Maintenance	001	DOT	GDOT
0014902	SR 62 @BREASTWORKS BRANCH; @DRY CREEK & @DRY CREEK OVERFLOW	Early	Bridges	002	DOT	GDOT
0019020	CR 1/BELLVIEW ROAD @ BIG DRAIN CREEK	Miller	Bridges	002	DOT	GDOT
M006264	SR 234 @ FLINT RIVER IN ALBANY - BRIDGE REHAB	Dougherty	Bridges	002	DOT	GDOT
M006357	I-185 @ 9 LOCS IN HARRIS & MUSCOGEE CO - BRIDGE PRESERVATION	Muscogee	Bridges	002, 003	DOT	GDOT
M006389	SR 7; SR 19; SR 42; SR 49 & SR 257@8 LOC-BRIDGE PRESERVATION	Appling	Bridges	002, 008	DOT	GDOT
0019558	SR 154 @ 7 LOCS IN DEKALB & 1 LOC IN FULTON - VRU	DeKalb	Pedestrian Facilities	005	DOT	GDOT
0019834	SR 280 @ CS 2645/NORTHWEST DRIVE	Fulton	Intersection Improvement	005	DOT	GDOT
0020955	I-75 FROM I-85 TO MEMORIAL DRIVE	Fulton	Lighting	005	DOT	GDOT



## GDOT Let Projects August 2025 Letting

Project ID	Description	Primary County	Primary Work Type	Congressional District	Project Let By	Project Sponsor
0021192	BUFORD SPRING CONNECTOR @ I-85 - TUNNEL LIGHTING	Fulton	Lighting	005	DOT	GDOT
0018191	I-285 FROM SR 14 TO CS 2971/MT GILEAD ROAD	Fulton	Roadway Project	005, 006	DOT	GDOT
0018192	I-285 FROM CS 2971/MT GILEAD ROAD TO CS 843/COLLIER DRIVE	Fulton	Roadway Project	005, 006	DOT	GDOT
0016605	CR 581/BETHSAIDA ROAD @ MORNING CREEK	Fulton	Bridges	006	DOT	GDOT
0018193	I-285 FROM CS 843/COLLIER DRIVE TO CR 2838/PACES FERRY ROAD	Cobb	Roadway Project	006	DOT	GDOT
0020764	I-75 @ I-285 EB - TUNNEL LIGHTING	Cobb	Lighting	006	DOT	GDOT
M006573	I-285 @ CHATTAHOOCHEE RIVER - BRIDGE REHAB	Fulton	Bridges	006, 007	DOT	GDOT
M006531	INTERSTATE N PKWY & POWERS FERRY@ 2 LOC IN COBB-BRIDGE REHAB	Cobb	Bridges	006, 007, 011	DOT	GDOT
0019259	CR 246/FIDDLER GREEN RD @ RED BLUFF CREEK 0.9 MI S OF AXSON	Atkinson	Bridges	008	DOT	GDOT
0019260	CR 246/FIDDLER GREEN ROAD @ RED BLUFF CREEK 3 MI N OF AXSON	Atkinson	Bridges	008	DOT	GDOT
M006658	I-85 FROM N OF SR 63/BANKS TO SOUTH CAROLINA STATE LINE	Franklin	Pavement Markings	009, 010	DOT	GDOT

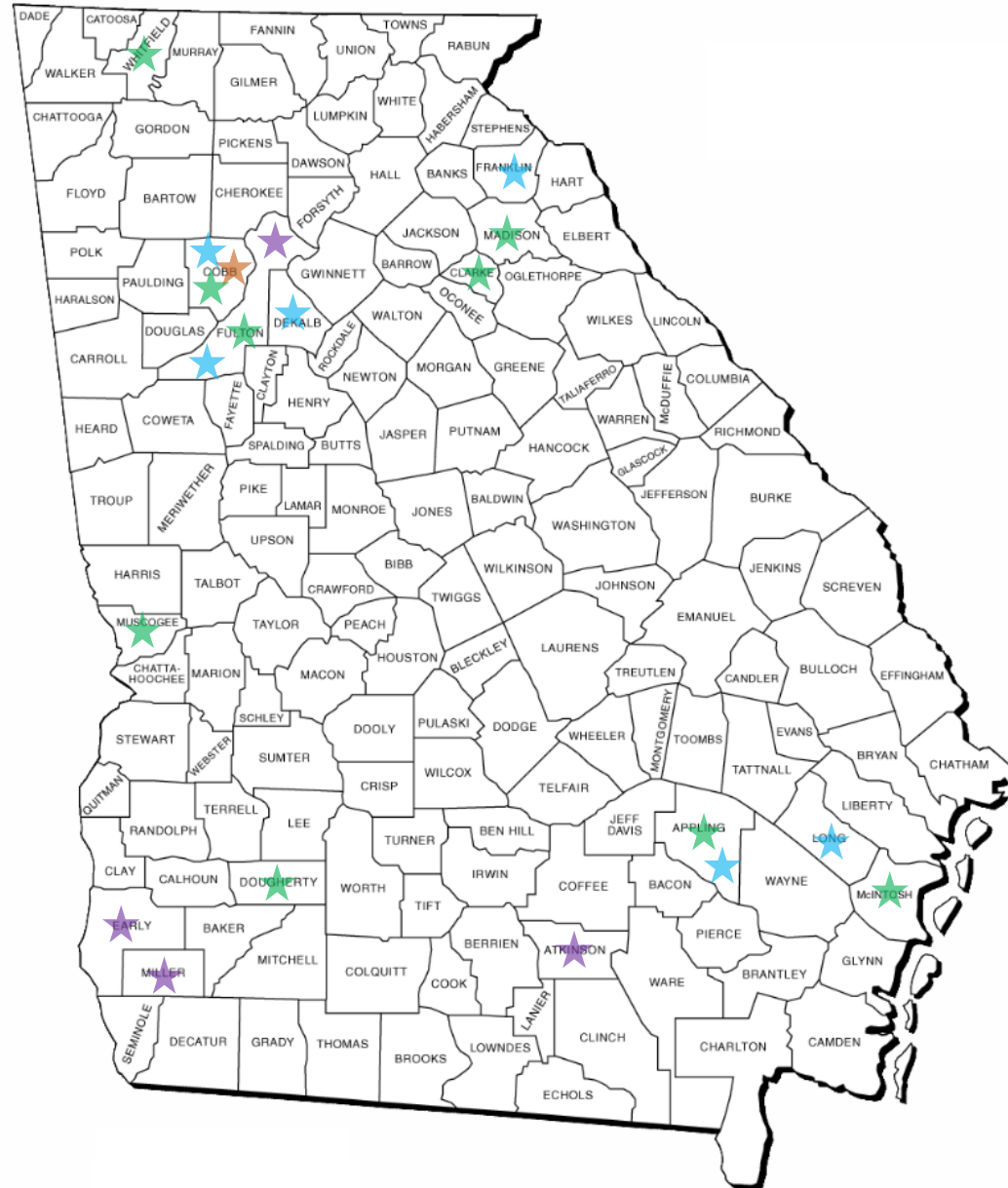


## GDOT Let Projects August 2025 Letting

Project ID	Description	Primary County	Primary Work Type	Congressional District	Project Let By	Project Sponsor
0020729	OFF-SYSTEM SAFETY IMPROVEMENTS @ 4 LOCS IN MADISON COUNTY	Madison	Shoulder Work	010	DOT	GDOT
M006393	BRIDGE PRESERVATION @ 6 LOCS IN CLARKE & WALTON COUNTY	Clarke	Bridges	010	DOT	GDOT
M006510	I-75 FROM SR 156/GORDON TO SR 3/WHITFIELD	Whitfield	Pavement Markings	011, 014	DOT	GDOT
0020382	SHARP CURVE TREATMENTS @ 58 LOCS IN DISTRICT 6	Appling	Sharp Curve Treatments	ALL	DOT	GDOT
0020383	SHARP CURVE WARNING SIGNS @ 116 LOCS IN DIST 6 - AREA 3 & 4		Signing	ALL	DOT	GDOT



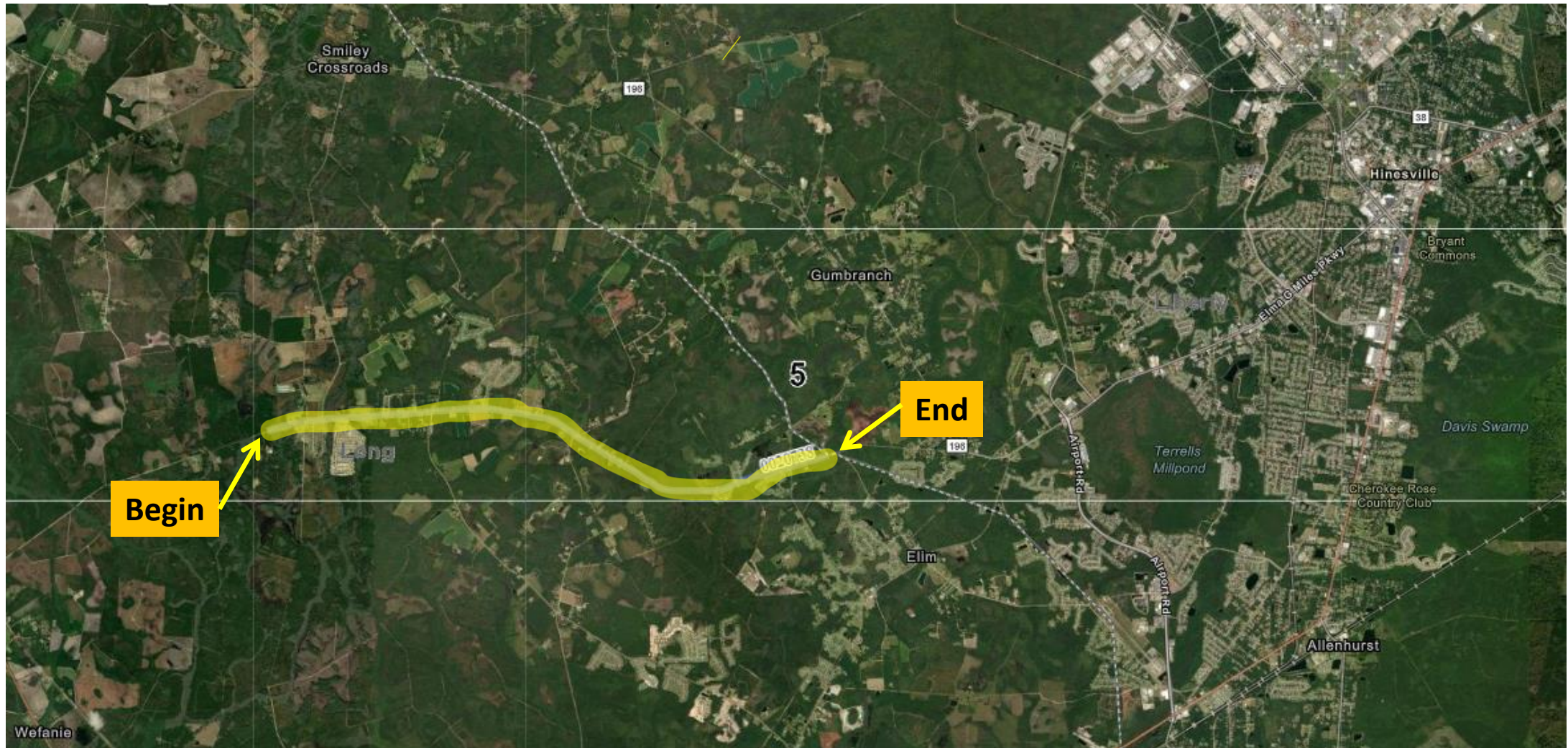
# August 2025 Projects Throughout Georgia





# OFF-SYSTEM SAFETY IMPROVEMENTS @ 1 LOC IN LONG COUNTY – HRRR

## Pavement Markings Project in Long County Congressional District 1





# I-95 FROM GLYNN COUNTY LINE TO N OF SR 251

## Resurfacing Project in McIntosh County

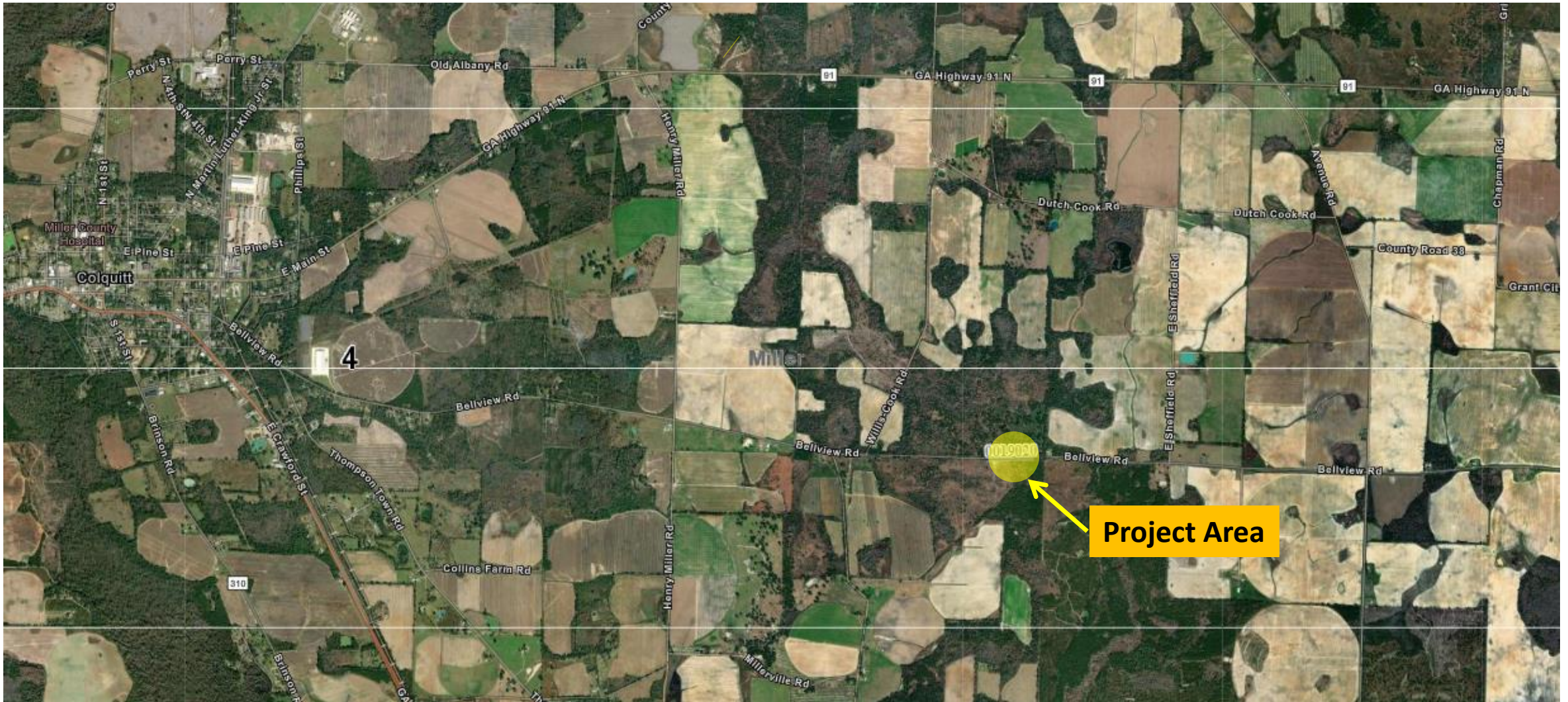
### Congressional District 1





# CR 1/BELLVIEW ROAD @ BIG DRAIN CREEK

## Bridge Replacement Project in Miller County Congressional District 2





# **CR 1/BELLVIEW ROAD @ BIG DRAIN CREEK**

Bridge Replacement Project in Miller County  
Congressional District 2 (continued)





# SR 62 @BREASTWORKS BRANCH; @DRY CREEK & @DRY CREEK OVERFLOW

## Bridge Replacement Project in Early County Congressional District 4





# **SR 62 @BREASTWORKS BRANCH; @DRY CREEK & @DRY CREEK OVERFLOW**

Bridge Replacement Project in Early County  
Congressional District 4 (continued)





# SR 280 @ CS 2645/NORTHWEST DRIVE

## Intersection Improvement Project in Fulton County

### Congressional District 5

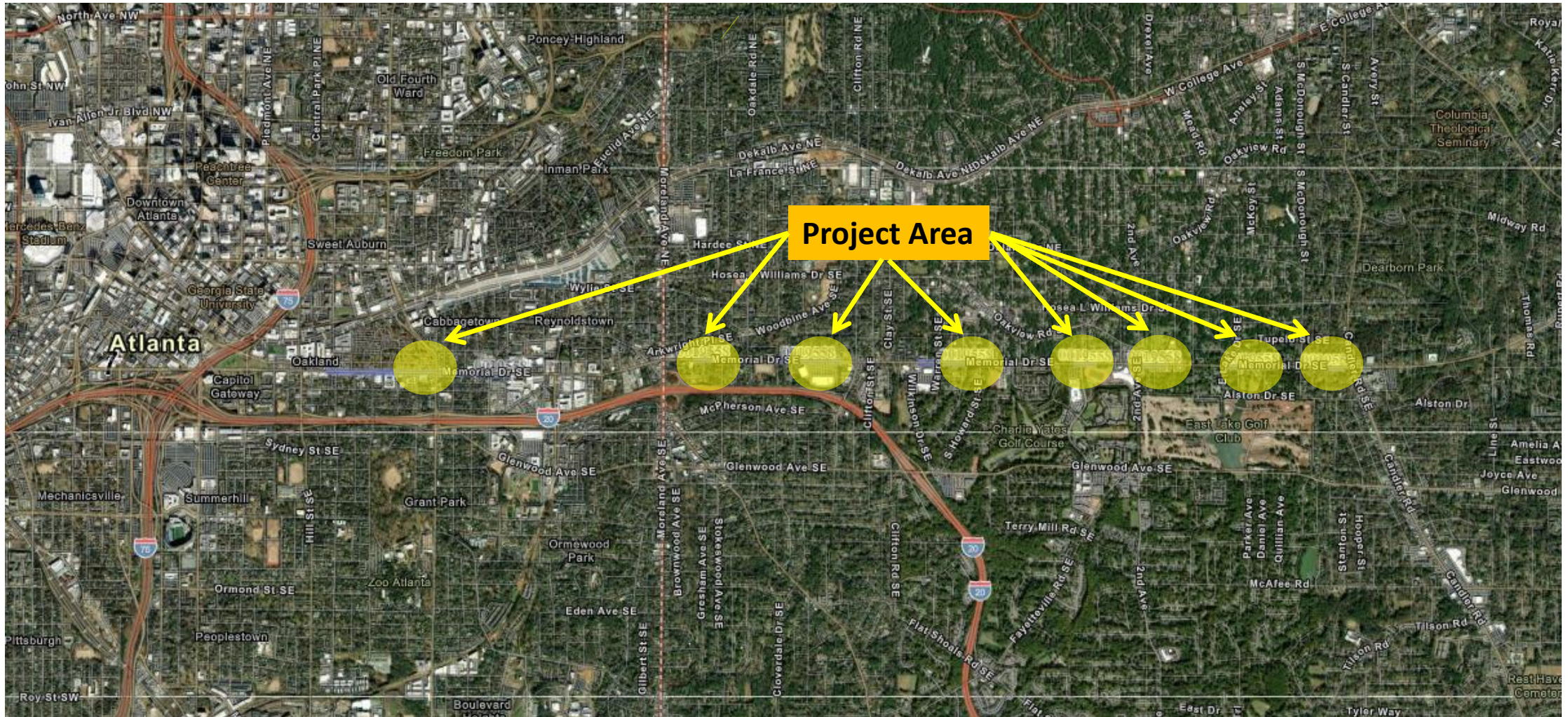




# SR 154 @ 7 LOCS IN DEKALB & 1 LOC IN FULTON – VRU

## Pedestrian Facilities Project in DeKalb County

### Congressional District 5





**I-285 FROM SR 14 TO CS 2971/MT GILEAD ROAD, I-285 FROM CS 2971/MT GILEAD ROAD TO CS 843/COLLIER DRIVE, I-285 FROM CS 843/COLLIER DRIVE TO CR 2838/PACES FERRY ROAD**  
Roadway Project in Fulton & Cobb County: Congressional District 5 & 6





# CR 581/BETHSAIDA ROAD @ MORNING CREEK

## Bridge Replacement Project in Fulton County

### Congressional District 6





# **CR 581/BETHSAIDA ROAD @ MORNING CREEK**

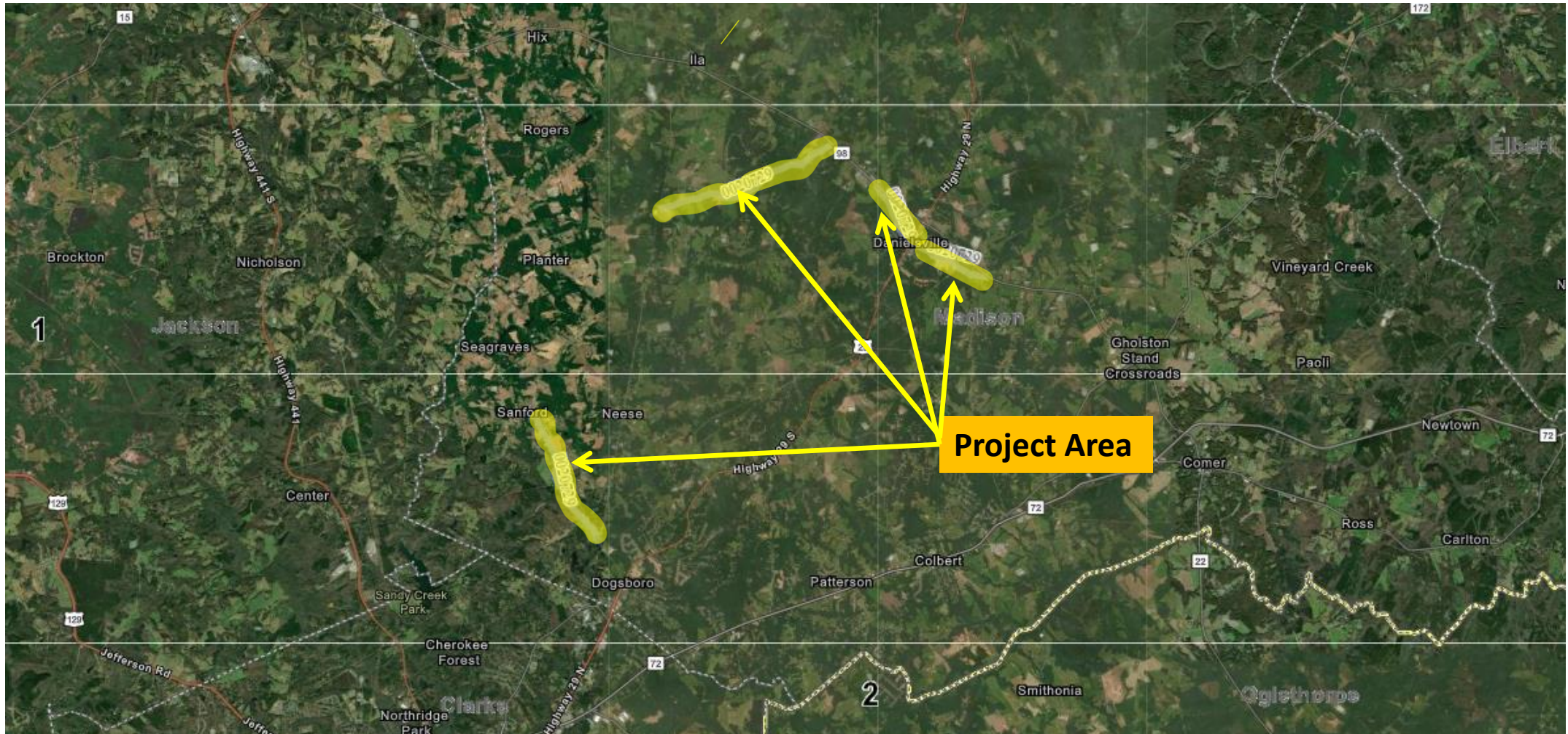
## Bridge Replacement Project in Fulton County Congressional District 6 (continued)





# OFF-SYSTEM SAFETY IMPROVEMENTS @ 4 LOCS IN MADISON COUNTY

## Shoulder Work Project in Madison County Congressional District 10





# **Projects Previously Presented to the Board For Advanced Advertisement In the August 2025 Letting**



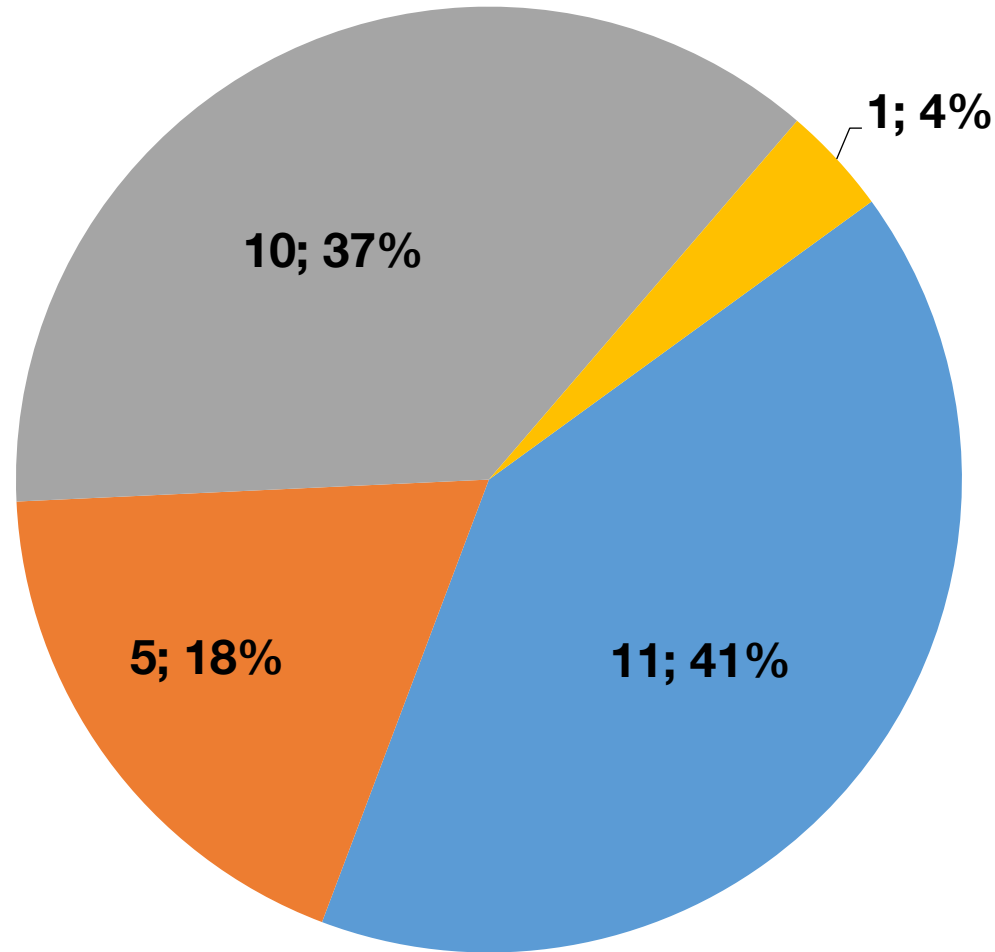
## GDOT Project Previously Presented to the Board for Advanced Advertisement In the August 2025 Letting

Project ID	Description	Primary County	Primary Work Type	Congressional District	Project Let By	Project Sponsor	Letting Presentation Date
0017411	I-95 FM FLORIDA STATE LINE TO S CAROLINA STATE LINE-ITS EXP	Appling	ITS	001	DOT	GDOT	January 2025



# Fiscal Year 2026 Letting Report

Number of Projects  
August 2025 Letting



## GDOT Lets

- Maintenance
- Bridges
- Safety
- Roads

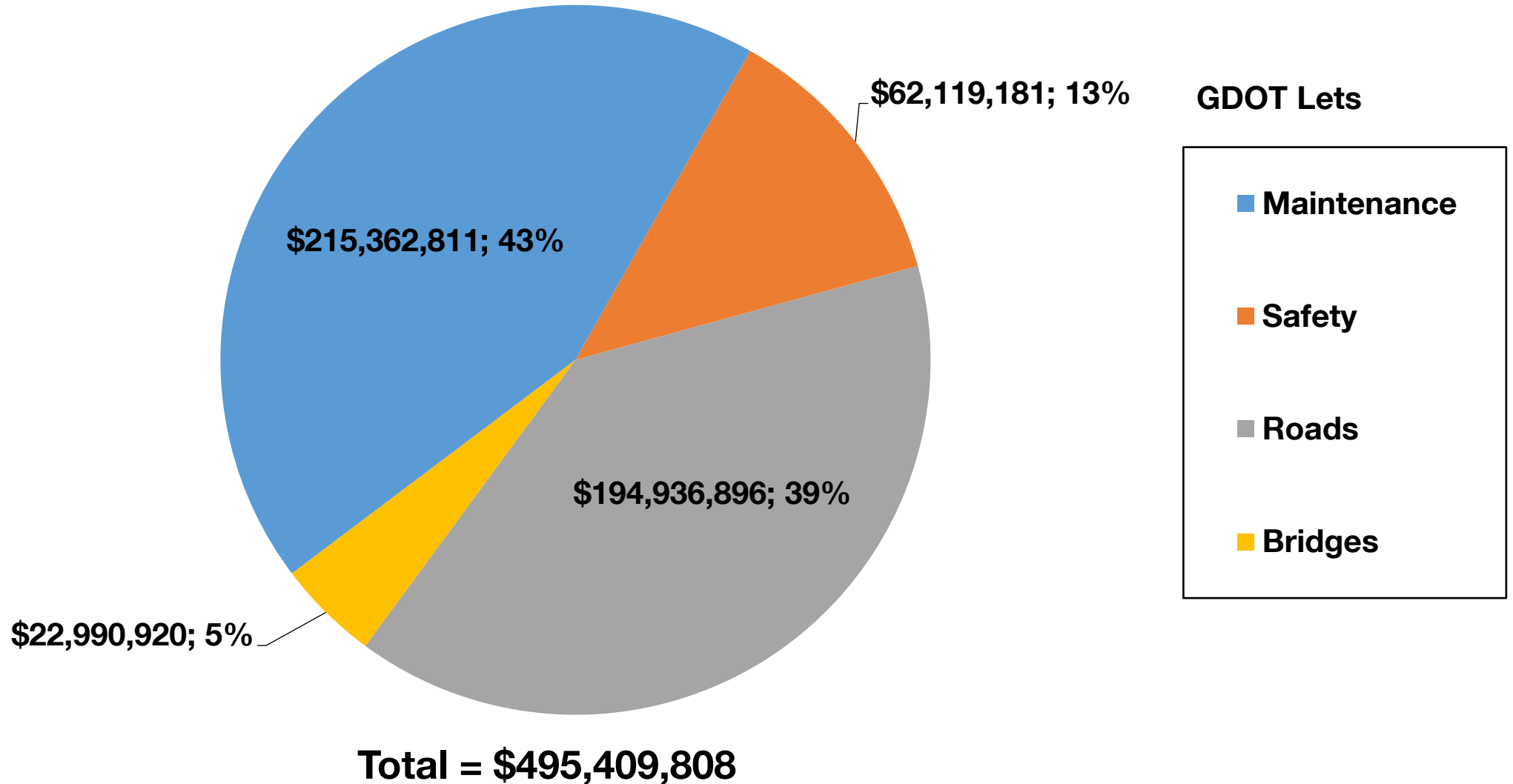
**Total = 27**



# Fiscal Year 2026 Letting Report

Dollar Amount of Projects

August 2025 Letting







# For Board Review

## Proposed Revisions to the Construction Work Program

**Matt Markham**

**Deputy Director of Planning**

**July 17, 2025**



# August 2025 CWP Board Revision For Board Review

Project ID	Description	County	Congressional District	Primary Work Type	Action
0019129	CR 225/BURL LANE ROAD @ DRY CREEK TRIB	Seminole	002	Bridges	Change in Description
0021344	SR 17 @ ROCK CREEK	Wilkes	012	Bridges	Addition to the Program





# Commissioner's Report to the State Transportation Board

**Andrew Heath, P.E.**  
**Deputy Commissioner**  
**July 17, 2025**



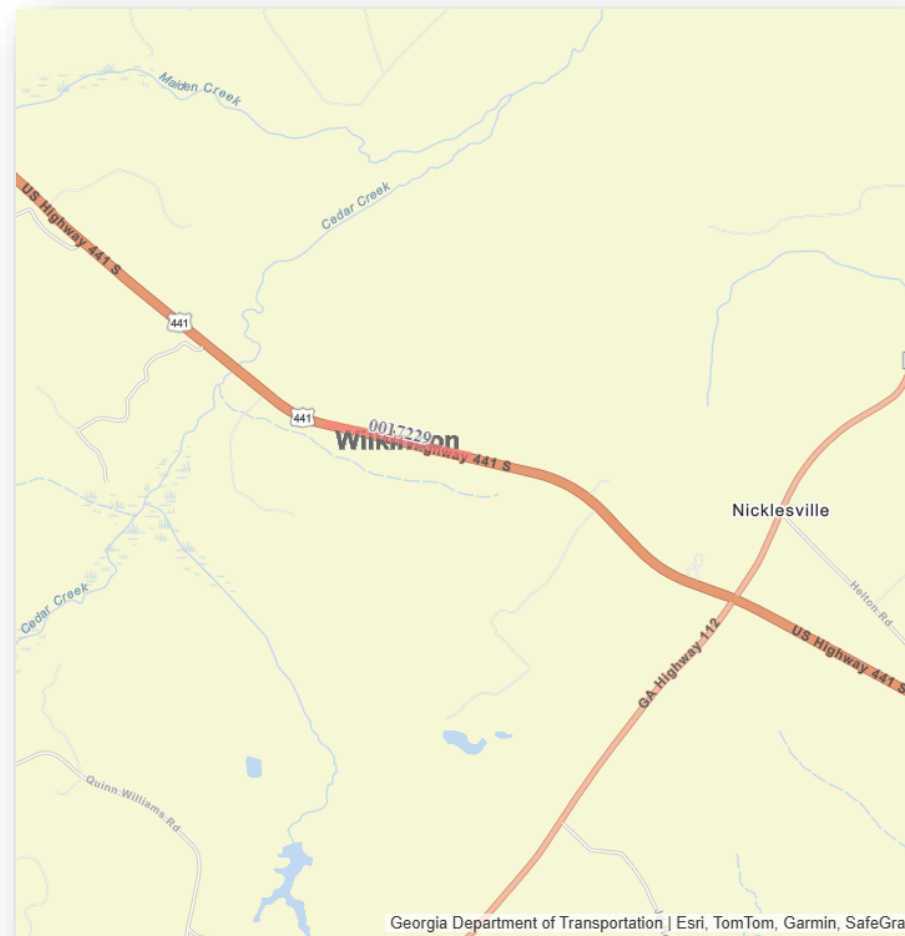
# Commissioner's Update: June 2025 Data

- ☐ Transportation Fund Collections
- ☐ Employment Data
- ☐ Professional Services Procurement Update
- ☐ Highlights of Projects Open to Traffic



# Slope Repair – 0017229

on US 441/SR 29 from milepost 4.13 to milepost 3.96 in Wilkinson County





# Slope Repair – 0017229

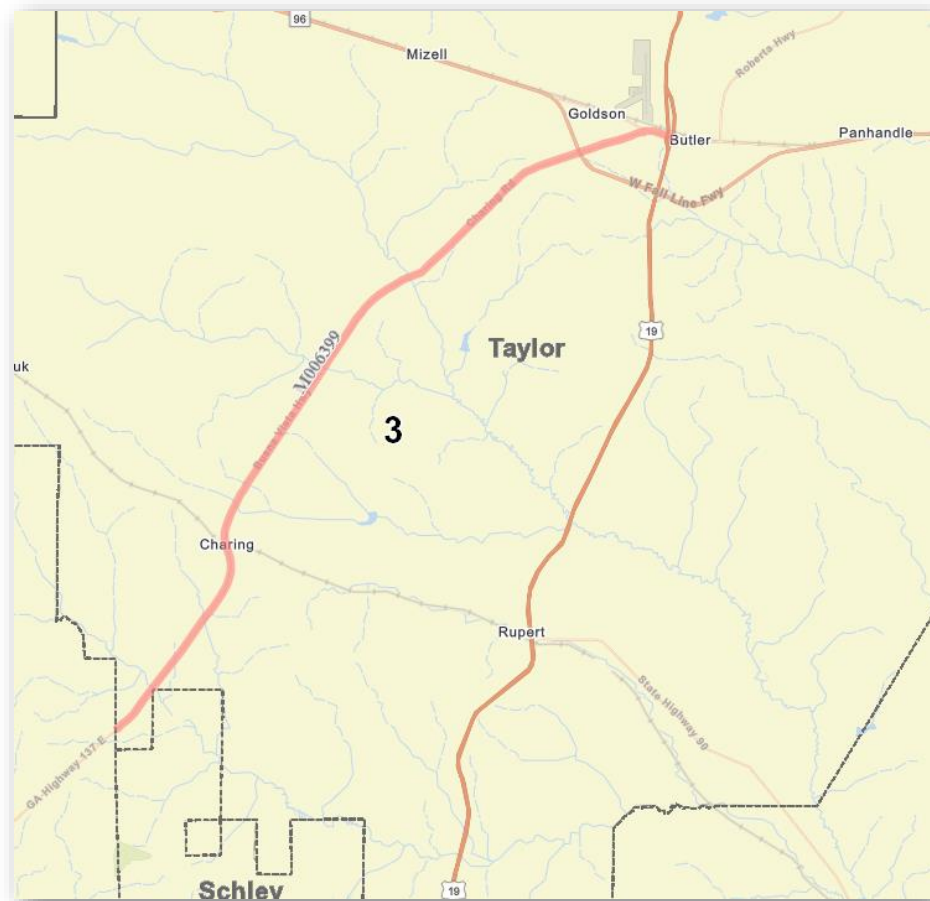
on US 441/SR 29 from milepost 4.13 to milepost 3.96 in Wilkinson County





# Resurfacing – M006399

on SR 137 from the Marion County line to SR 3 in Taylor County





# Resurfacing – M006399

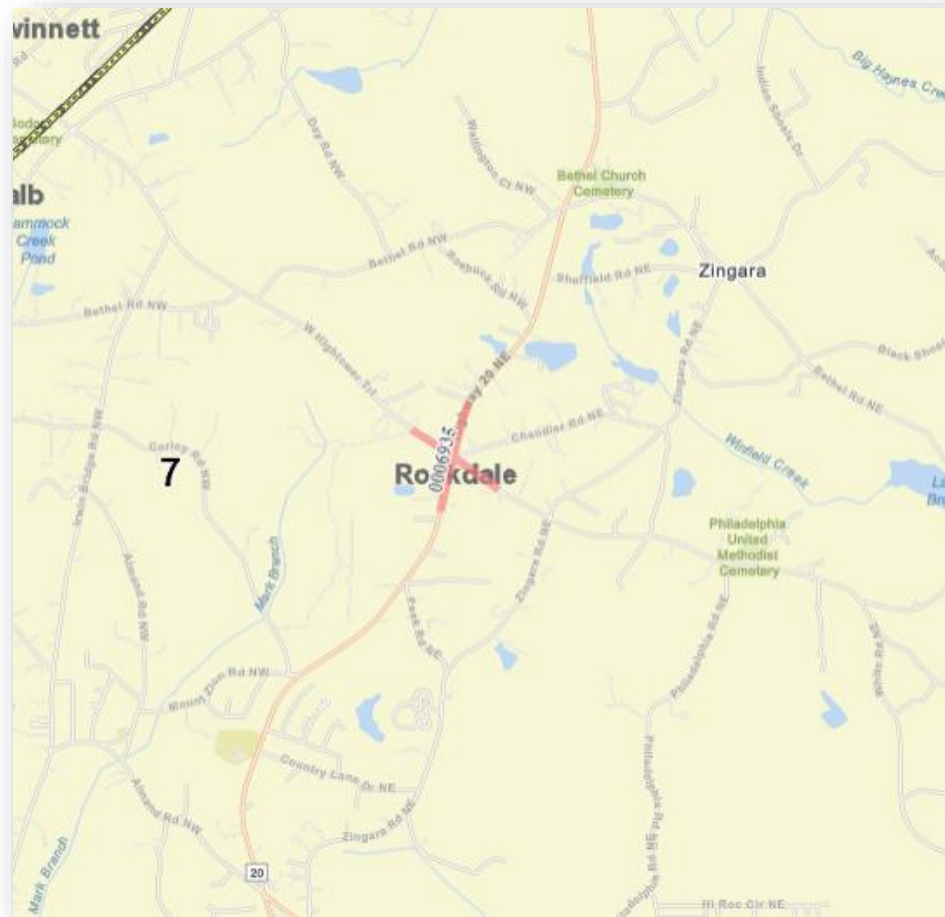
on SR 137 from the Marion County line to SR 3 in Taylor County





# Construction of a Roundabout and Cul-de-sac - 0006935

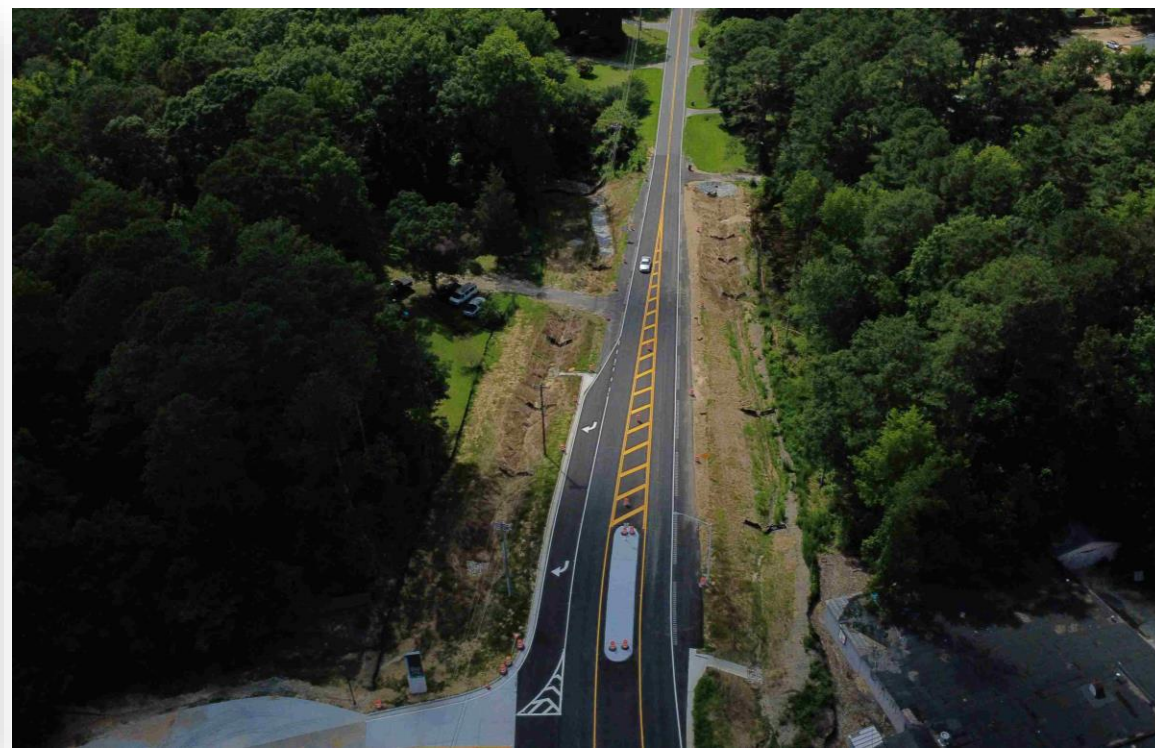
at the intersection of SR 20/Loganville Highway and West High Tower Trail and on Chandler Road in Rockdale County





# Construction of a Roundabout and Cul-de-sac - 0006935

at the intersection of SR 20/Loganville Highway and West High Tower Trail and on Chandler Road in Rockdale County





# Rehabilitation of a Runway at Plantation Airpark in Screven County







## **Honors, Updates, Achievements & Recognitions**



# John Hibbard named Deputy Chief Engineer





# 100 Most Influential Women in Georgia Engineering



**ANN PURCELL**

*Board Member - 1st Congressional District / GDOT*

Purcell, a former state legislator, is serving her third term on the State Transportation Board representing the 1st Congressional District. Her district encompasses 17 counties in Southeast Georgia including Bacon, Brantley, Bryan, Camden, Charlton, Chatham, Clinch, Echols, Effingham, Glynn, Liberty, Long, Lowndes, McIntosh, Pierce, Ware, and Wayne. She's the Chair of the

Statewide Transportation Planning/Strategic Planning Committee and the Vice Chair of the Intermodal Committee and the Legislative Committee. Purcell is also a member of the Finance Committee, Program Delivery Committee, and the Gateways Committee.



ARTICLES

## 100 INFLUENTIAL WOMEN IN GEORGIA ENGINEERING THE 2025 LIST

BY ACEC GEORGIA | JUNE 26, 2025



**CATHY WILLIAMS**

*Board Member / GDOT*

Williams has a strong background in community development. Williams previously led NeighborWorks Columbus as President & CEO and served on the Muscogee County School District Board. At GDOT, she contributes to several key committees, including Equal Access, where she serves as Vice Chairman, and Property Utilization, where she holds the position of Chairman. Williams is recognized for her advocacy of infrastructure improvements, notably supporting new interchange projects in Columbus to enhance regional connectivity. Her leadership reflects a commitment to equitable transportation planning and community engagement across Georgia.



**STACEY KEY**

*Board Member - 5th Congressional District / GDOT*

Key is the President and CEO of the Georgia Minority Supplier Development Council (GMSDC), Georgia's leading advocacy organization for supplier diversity and small business development. Key is a 25-year veteran with a variety of global brands, including IBM, Bellsouth/AT&T, Schlumberger, and Samsung Telecommunications. She's actively involved in the community

and serves on the Board of Directors of GDOT, Emory University Center for Ethics, the College Football Hall of Fame, the Georgia Chamber of Commerce, and the Midtown Alliance.



**EMILY DUNN**

*Board Member - 9th Congressional District / GDOT*

As well as serving on GDOT's board, Dunn is CEO of Tom's Amusement Company, Inc., a traditional street operator headquartered in Blue Ridge, Georgia. Dunn is no stranger to civic involvement and has served on numerous boards over the past two decades. She currently serves on the board of the Amusement and Music Operators Association (AMO) and is a recent past president. She served

as chair of AMO's Government Relations Committee and was pivotal in directing AMO's battling Operation Choke Point activities.



**DANA LEMON**

*Board Member - 13th congressional district / GDOT*

Lemon currently serves on the Trustee Board for Clayton State University in Morrow, Georgia. Lemon is also serving her fifth term as the first woman elected to the Transportation Board of Georgia. Prior to her election, she served on the Davidson College Alumni Association and Henry County Chamber of Commerce. Her life of service was recognized in 2018 by the Georgia Senate and in 2012 by the Georgia House of Representatives, where she received

resolutions and commendations for her contributions to the State of Georgia and unselfish and dedicated public service.



# 100 Most Influential Women in Georgia Engineering



**JANNINE MILLER**

*Director of Planning, Executive Director for SRTA  
/ GDOT / State Road and Tollway Authority*

Miller holds a multifaceted role as the Executive Director at the State Road and Tollway Authority, Georgia Regional Transportation Authority, and Atlanta-Region Transit Link Authority, appointed by Governor Kemp. Additionally, she serves as his appointee for Director of Planning at GDOT. With an illustrious career spanning various government and private sector roles, Miller has served as Deputy Assistant Secretary and Senior Advisor to Secretary

Elaine Chao at the U.S. Department of Transportation, Senior Advisor to the U.S. Agriculture Secretary Sonny Perdue, and Director of the Center of Innovation for Logistics at the Georgia Department of Economic Development. Miller is a distinguished alumna, holding a Masters of Business Administration in Global Commerce from Georgia Tech and a Masters of Public Administration from Georgia State University.



**MEG PIRKLE**

*Chief Engineer / GDOT*

Pirkle oversees engineering, construction, and project management for the Department's \$2.5 billion statewide capital program. Pirkle also oversees the P3 program, statewide maintenance, traffic operations, and intermodal programs. Pirkle earned a bachelor's degree in civil engineering from Vanderbilt University and a master's degree in civil engineering from Georgia Tech and is a registered Professional Engineer.



**ANGELA WHITWORTH**

*Treasurer / GDOT*

Whitworth is charged with the administration and management of GDOT's \$3.9 billion annual budget. Having 32 years of accounting and finance experience in both the public and private sectors, Whitworth established a thorough understanding of GDOT's finance and accounting practices by serving as assistant budget administrator, financial management administrator, director of finance, and assistant treasurer. With 25 years of service to the State of

Georgia, she also held various accounting and

financial roles with the State Board of Pardons and Paroles and the Georgia General Assembly's Legislative Budget Office. She also serves on the AASHTO Committee on Funding and Finance and is the current SASHTO treasurer.



**HIRAL PATEL**

*Division of P3 / GDOT*

Patel began her lifelong career at GDOT as a Construction Project Engineer in the Atlanta, Georgia office. Over the next 25 years, she served in several roles: Area Engineer in the Gainesville District, Senior Project Manager, Assistant State Program Delivery Administrator, and State Environmental Administrator. Currently, Patel is an active participant on several committees: the Steering Committee of AASHTO Council of Active Transportation, AASHTO Work Zone Subcommittee (Vice Chair), AASHTO Active Transportation Research Subcommittee (Chair), GDOT Consultant Pre-Qualification Committee (Chair), and GPTQ Consultant Relations Committee (Co-Chair).



**KIMBERLY NESBITT**

*State Program Delivery Administrator /  
Georgia Department of Transportation*

Nesbitt's office is responsible for over 1100 projects that accounts for three plus billion dollars in funding. She began her 25-year GDOT career as a civil engineering technologist in the Office of Traffic Operations and progressed to various project and personnel management roles in the offices of Consultant Design, Traffic Safety and Design, and Program Delivery. Nesbitt has a Bachelor of Science

in civil engineering technology from South Carolina State University. She served eight years in the United States Air Force Reserves and was honorably discharged as a staff sergeant.



# 100 Most Influential Women in Georgia Engineering

Read the article here:





# Georgia DOT wins the ARTBA 2025 P3 Champions of the Year: Innovation of the Year Award



## Awards - P3s in Transportation Conference

Honoring outstanding achievement in the establishment and delivery of U.S. transportation P3s.



# Honorable Johnny Floyd Jr. Interchange Dedication





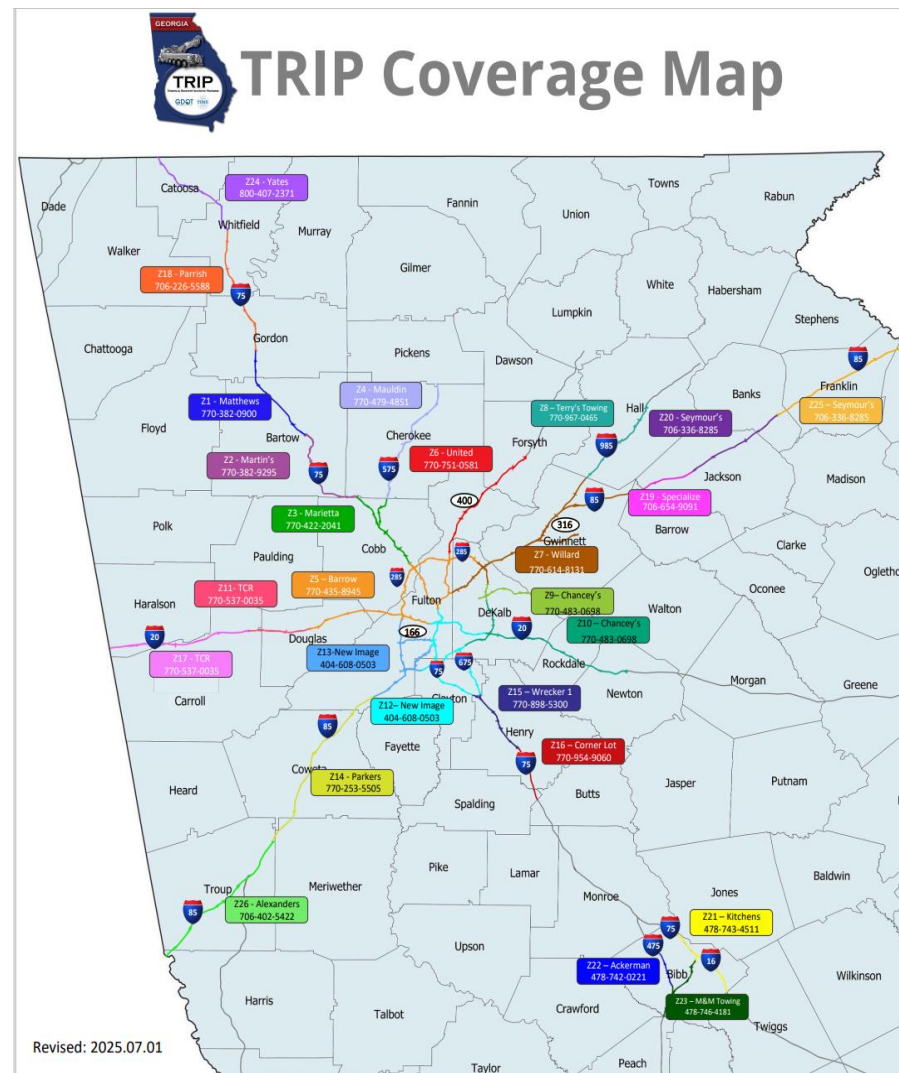






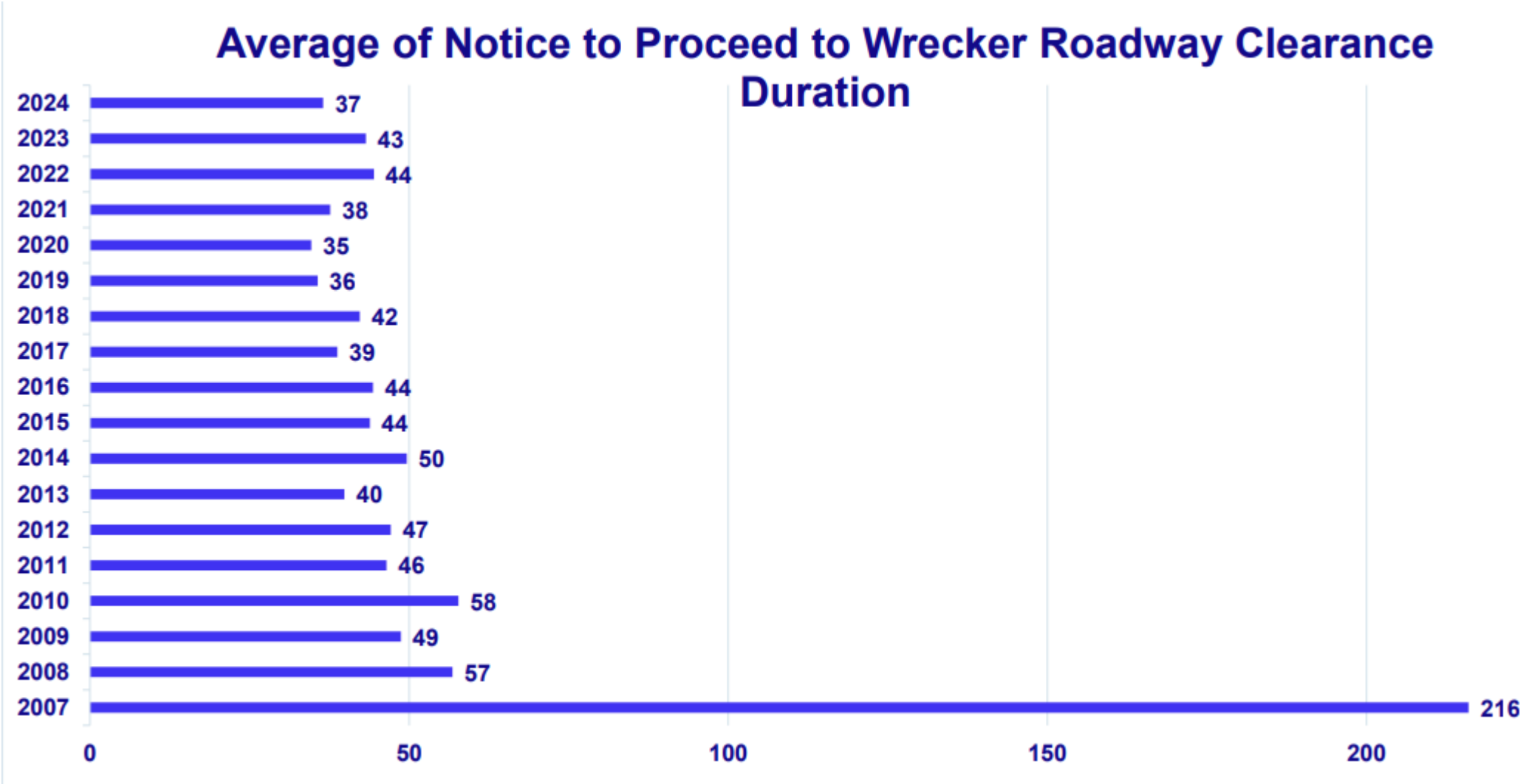


# Georgia Towing and Recovery Incentive Program (TRIP)



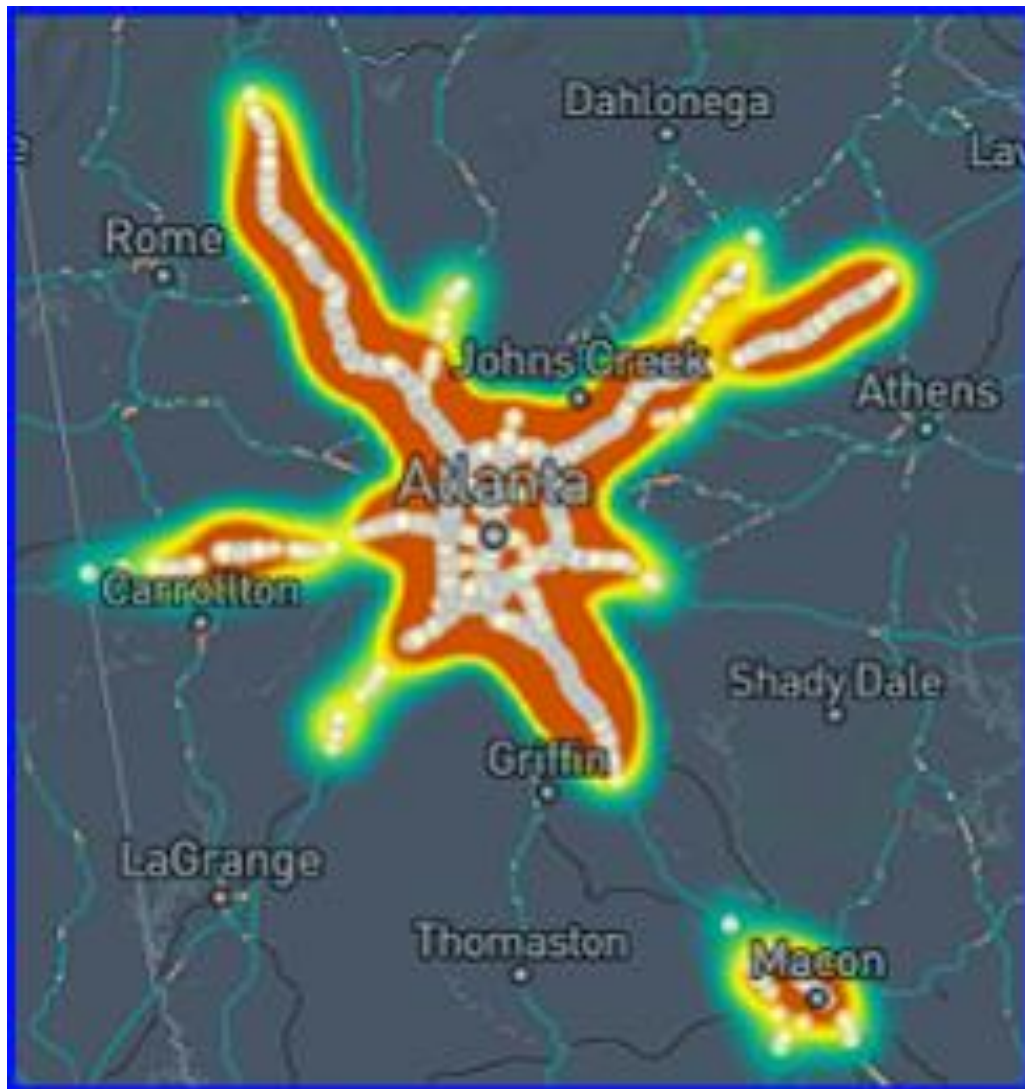


# Georgia Towing and Recovery Incentive Program (TRIP)





# TRIP Expands Coverage Area





# GDOT Supports "Check Your Height, Know It's Right"



I-16 Bridge Strike/Chatham Parkway



THE EASTERN  
TRANSPORTATION  
COALITION

CONNECTING FOR SOLUTIONS







- ❑ **Board Committee Reports**
  - **Administrative Committee**
  - **Equal Access Committee**
  - **Program Delivery Committee**
  - **Committee of the Whole**







## ☐ **New Business**

- Presentation by Jacob Collins,  
Tribal Liaison / Ocmulgee Mounds  
National Historic Park

## ☐ **Adjourn**







# State Transportation Board Meeting

July 17, 2025